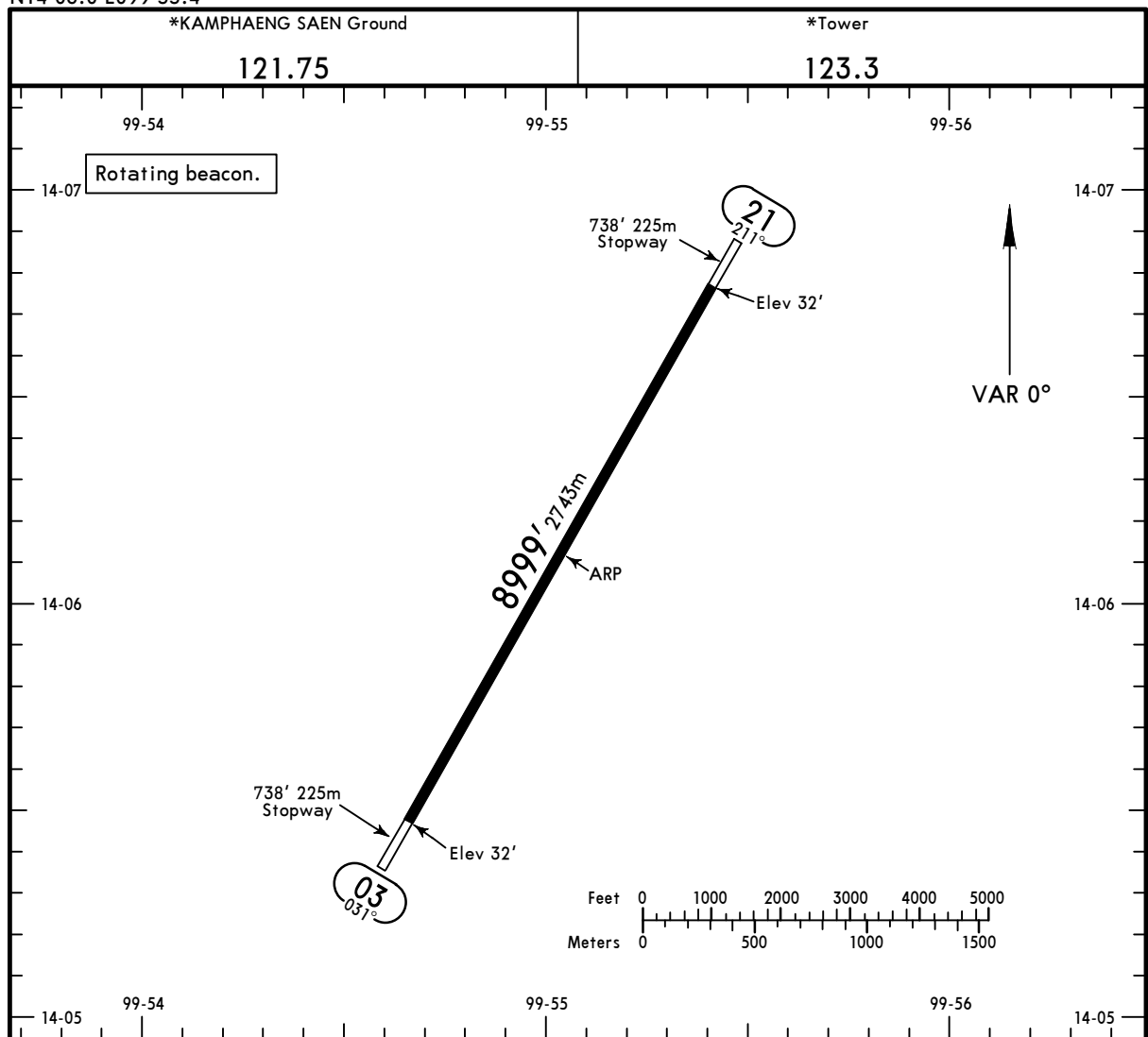


VTBK/KDT
 Apt Elev **32'**
 N14 06.0 E099 55.4

JEPPESEN NAKHON PATHOM, THAILAND
 28 JUN 19 **(10-9)**
KAMPHAENG SAEN



ADDITIONAL RUNWAY INFORMATION					
RWY		USABLE LENGTHS	LANDING BEYOND		WIDTH
			Threshold	Glide Slope	
03					
21	HIRL PAPI (angle 3.0°)			7743' 2360m	148' 45m

TAKE-OFF	
	AIR CARRIER All Rwys With HIRL
A	RVR 250m
B	RVR 300m
C	RVR 300m
D	RVR 400m

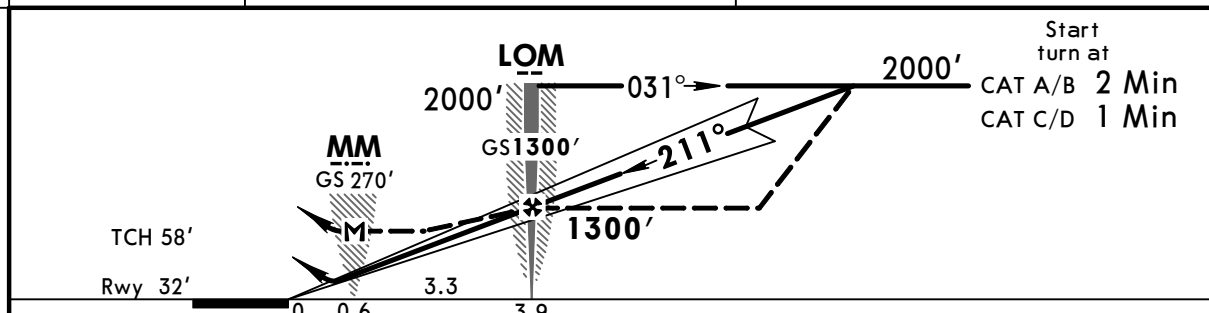
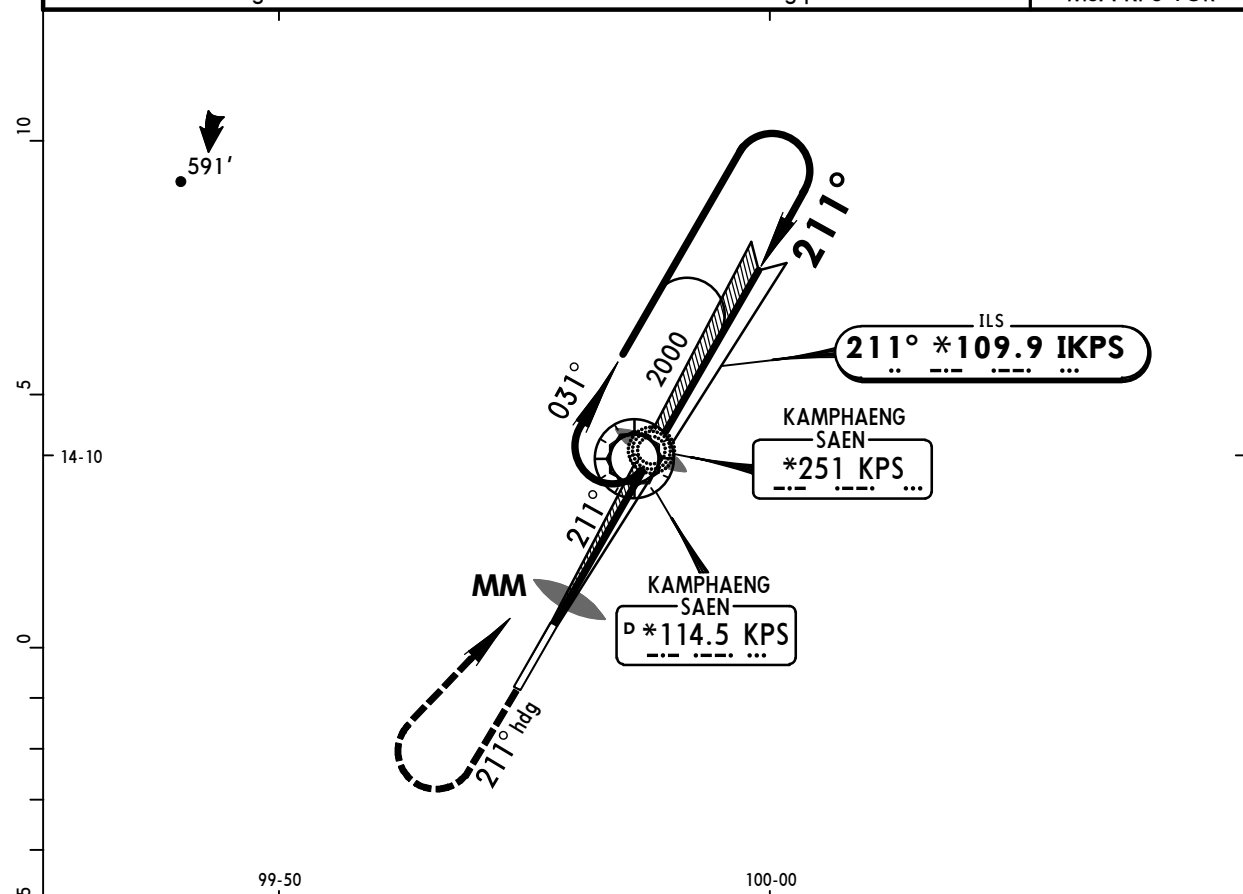
Kamphaeng Saen AFB not allowed as an alternate aerodrome for civilian aircraft.

**VTBK/KDT
KAMPHAENG SAEN**

**JEPESEN NAKHON PATHOM, THAILAND
ILS Rwy 21**

28 JUN 19 (11-1)

*KAMPHAENG SAEN Approach (R) 127.75		*KAMPHAENG SAEN Tower 123.3		*Ground 121.75	
LOC IKPS *109.9	Final Apch Crs 211°	GS LOM 1300' (1268')	ILS DA(H) Refer to Minimums	Apt Elev 32'	Rwy 32'
MISSED APCH: Climb straight ahead on heading 211° to 1000' turn RIGHT to KPS LOM at 2000' or as directed.					
Alt Set: hPa Rwy Elev: 1 hPa Trans level: FL130 Trans alt: 11000' 1. Aircraft arriving from northeast and southeast descend in holding pattern.					



Gnd speed-Kts	70	90	100	120	140	160	PAPI	1000' on 211°	2000' RT	KPS 251
GS	3.00°	372	478	531	637	743				
MAP at MM or LOM to MAP	3.3	2:50	2:12	1:59	1:39	1:25	1:14			

STRAIGHT-IN LANDING RWY 21 ILS DA(H) A: 232' (200') C: 252' (220') B: 242' (210') D: 262' (230')		LOC (GS out) MDA(H) 340' (308')		CIRCLE-TO-LAND	
PANS OPS	A	1200m	1600m	Max Kts	MDA(H)
	B			100	480' (448') -1600m
	C			135	610' (578') -1600m
	D			180	710' (678') -3200m
				205	730' (698') -3600m

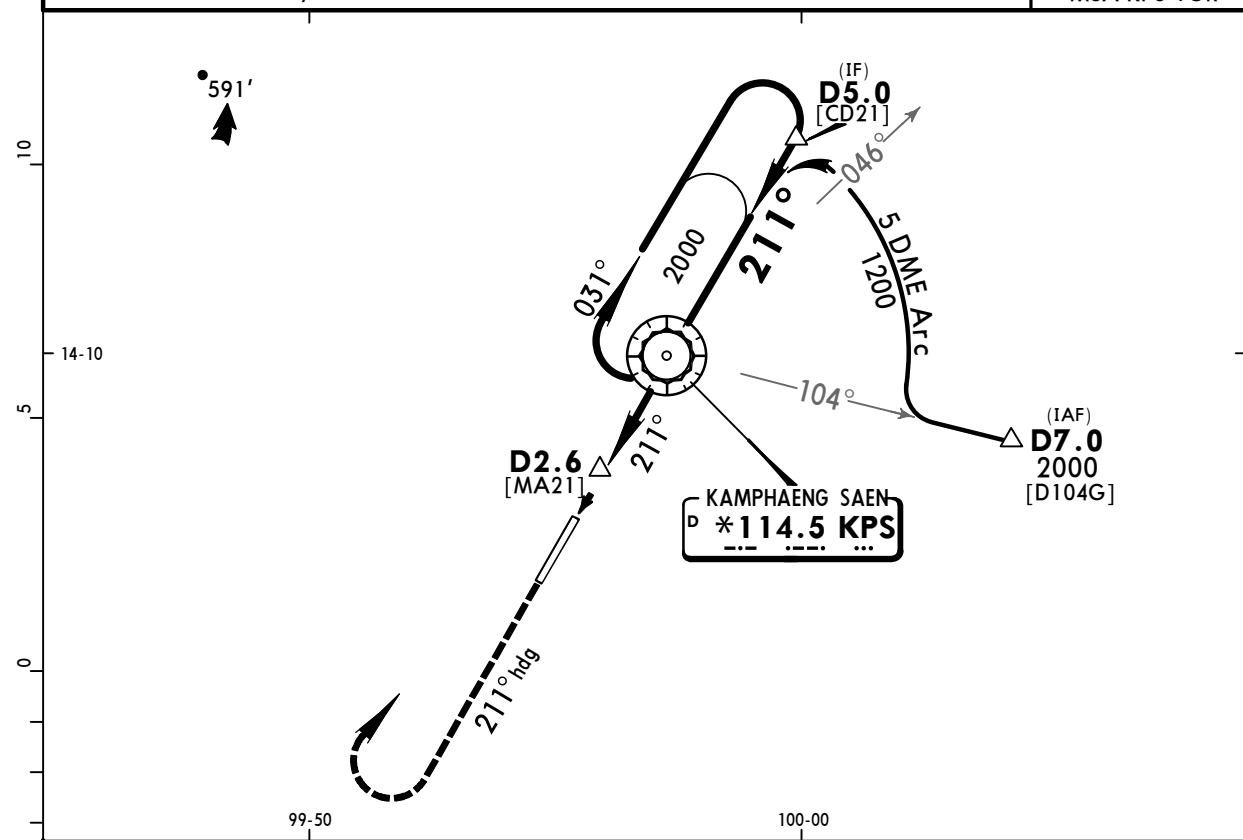
VTBK/KDT
KAMPHAENG SAEN



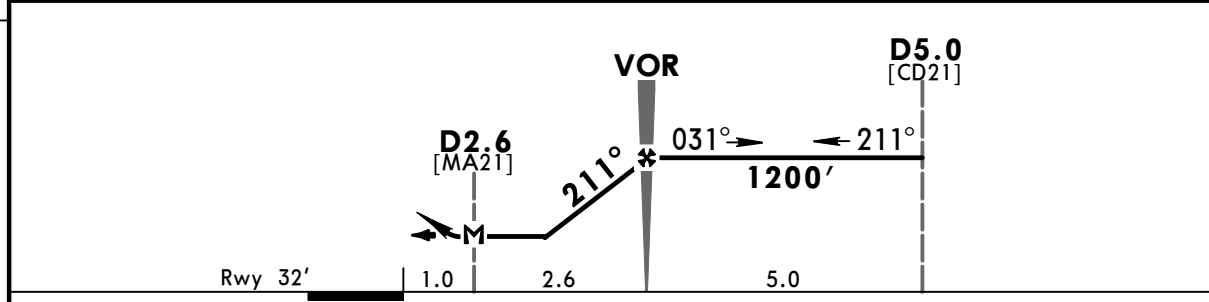
JEPPESEN NAKHON PATHOM, THAILAND
VOR DME Rwy 21

12 JUL 19 (13-1)

*KAMPHAENG SAEN Approach (R) 127.75		*KAMPHAENG SAEN Tower 123.3		*Ground 121.75
VOR KPS *114.5	Final Apch Crs 211°	Minimum Alt VOR 1200' (1168')	MDA(H) 360' (328')	Apt Elev 32' Rwy 32'
MISSED APCH: Climb on 211° heading to 1500' RIGHT turn back to KPS VOR at 2000' or as directed.				
Alt Set: hPa	Rwy Elev: 1 hPa	Trans level: FL130	Trans alt: 11000'	MSA KPS VOR



KPS DME	2.0	1.0
ALTITUDE(HAT)	575'	885'



Gnd speed-Kts	70	90	100	120	140	160	PAPI	1500' ↑ on 211° hdg	2000' RT	KPS *114.5	
Descent Gradient	5.1%	362	465	517	620	723					826
MAP at D2.6											

STRAIGHT-IN LANDING RWY 21		CIRCLE-TO-LAND	
MDA(H) 360' (328')			
PANS OPS	A	Max Kts	MDA(H)
	B	100	480' (448')-2400m
	C	135	610' (578')-2400m
	D	180	710' (678')-3200m
		205	730' (698')-3600m

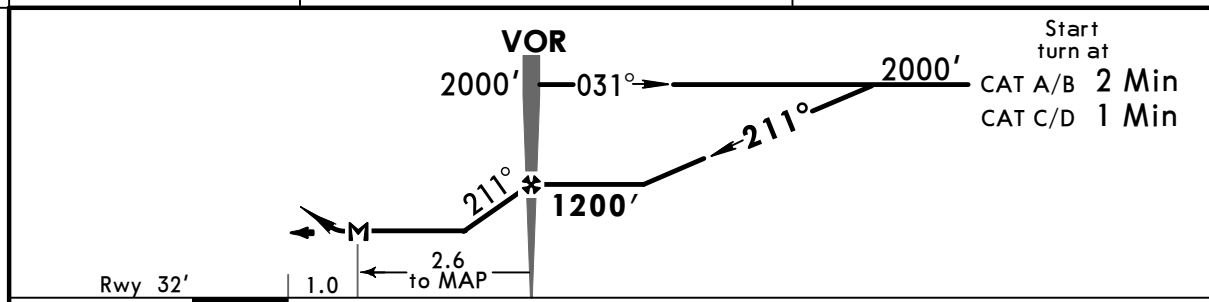
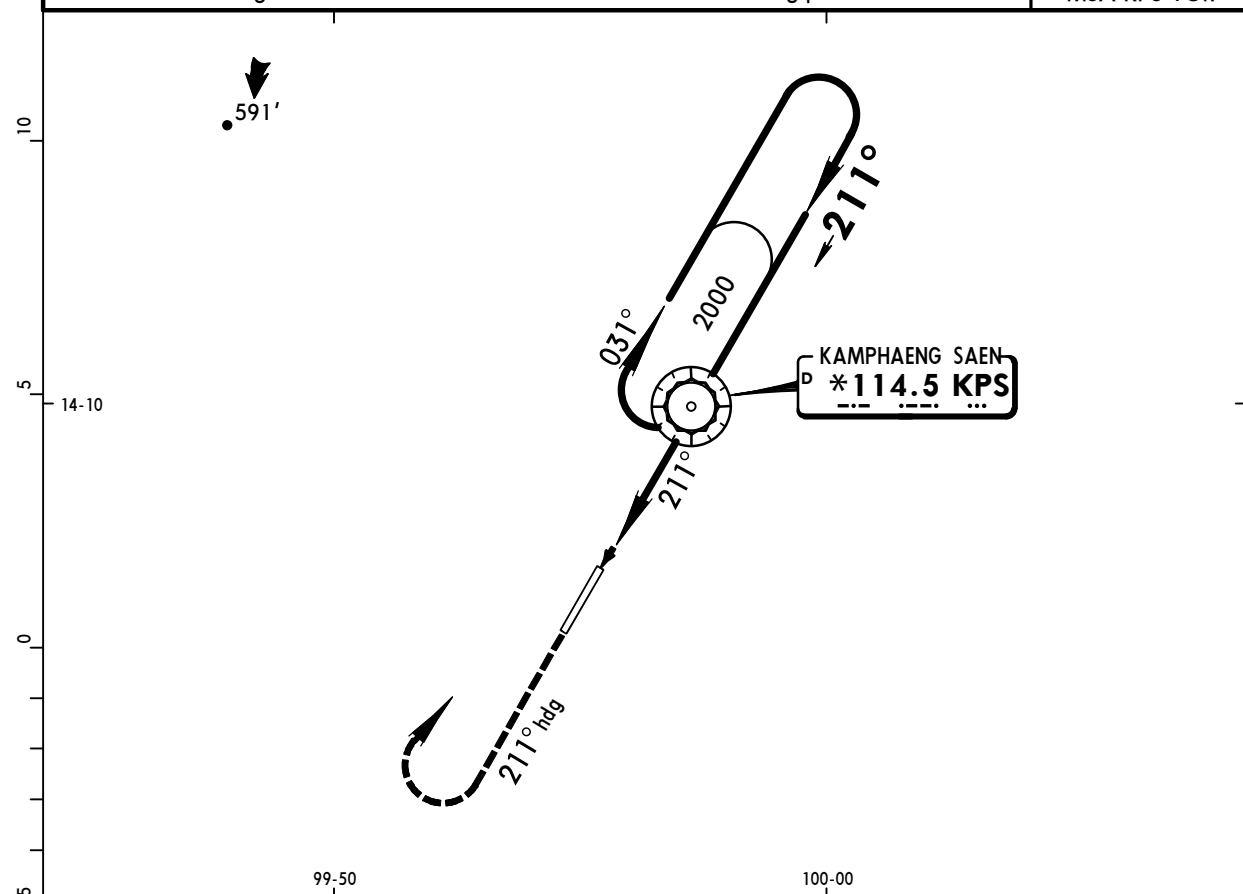
CHANGES: Communications, CNF's, airport and threshold elevations.

© JEPPESEN, 1999, 2019. ALL RIGHTS RESERVED.

VTBK/KDT
KAMPHAENG SAEN

JEPESEN NAKHON PATHOM, THAILAND
12 JUL 19 (13-2) **VOR Rwy 21**

*KAMPHAENG SAEN Approach (R) 127.75		*KAMPHAENG SAEN Tower 123.3		*Ground 121.75
VOR KPS *114.5	Final Apch Crs 211°	Minimum Alt VOR 1200' (1168')	MDA(H) 360' (328')	Apt Elev 32' Rwy 32'
MISSED APCH: Climb on 211° heading to 1500' RIGHT turn back to KPS VOR at 2000' or as directed.				
Alt Set: hPa Rwy Elev: 1 hPa Trans level: FL130 Trans alt: 11000' 1. Aircraft arriving from northeast and southeast descend in holding pattern.				



Gnd speed-Kts	70	90	100	120	140	160	PAPI	1500' ↑ on 211° hdg	2000' RT	KPS *114.5	
Descent Gradient	5.1%	362	465	516	620	723					826
FAF to MAP	2.6	2:14	1:44	1:34	1:18	1:07					0:59

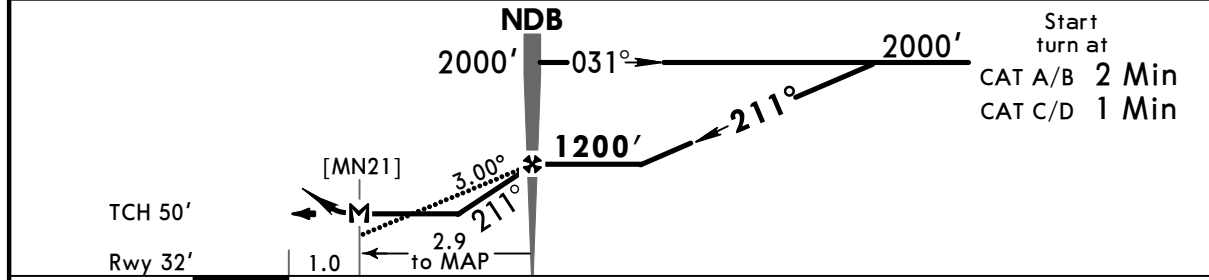
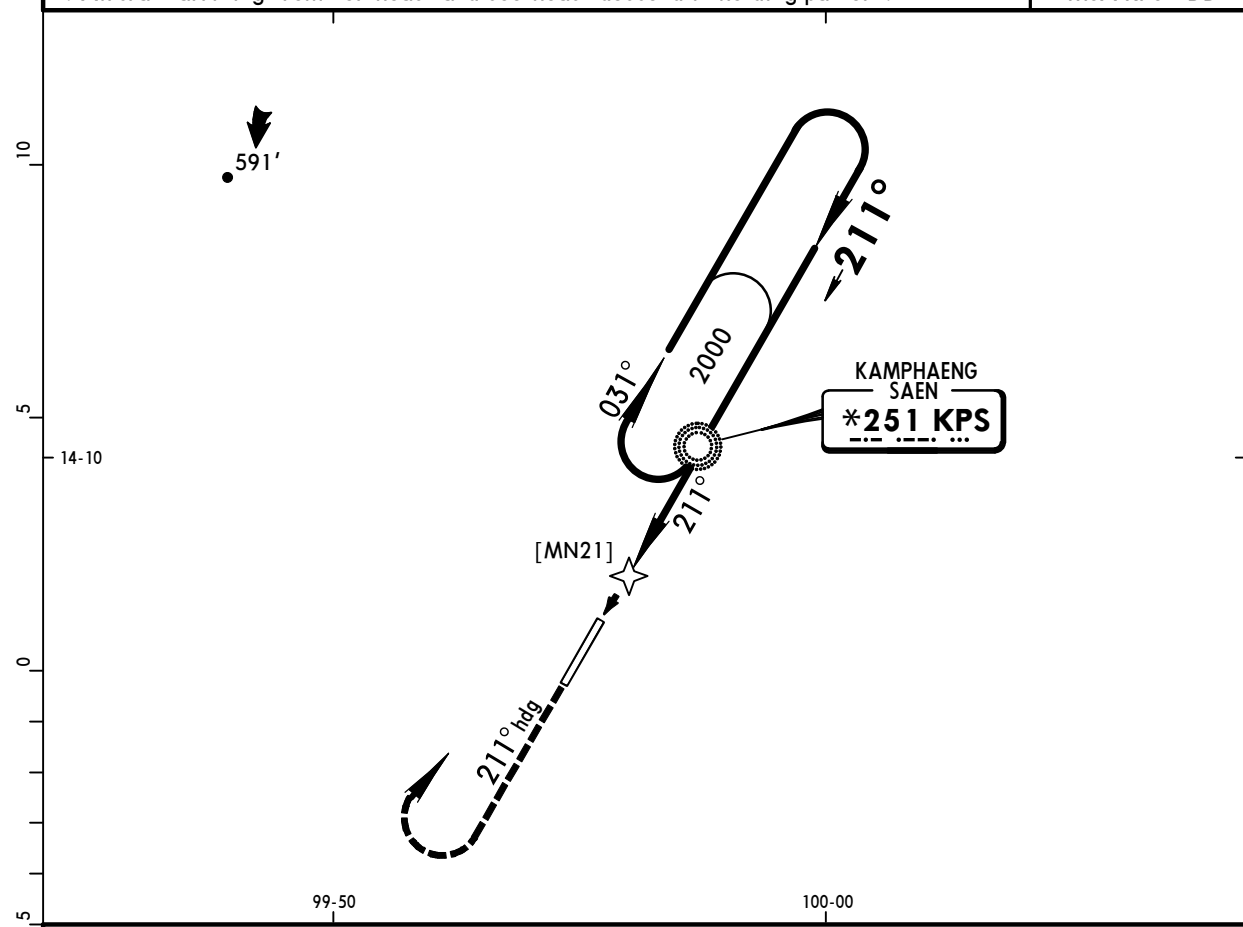
STRAIGHT-IN LANDING RWY 21		CIRCLE-TO-LAND	
MDA(H) 360' (328')			
PANS OPS	A	Max Kts	MDA(H)
	B	100	480' (448')-2400m
	C	135	610' (578')-2400m
	D	180	710' (678')-3200m
		205	730' (698')-3600m

**VTBK/KDT
KAMPHAENG SAEN**



**JEPPESSEN NAKHON PATHOM, THAILAND
12 JUL 19 (16-1) NDB Rwy 21**

*KAMPHAENG SAEN Approach (R) 127.75		*KAMPHAENG SAEN Tower 123.3		*Ground 121.75
NDB KPS *251	Final Apch Crs 211°	Minimum Alt NDB 1200' (1168')	MDA(H) 380' (348')	Apt Elev 32' Rwy 32'
MISSED APCH: Climb on 211° heading to 1500' RIGHT turn back to KPS NDB at 2000' or as directed.				
Alt Set: hPa Rwy Elev: 1 hPa Trans level: FL130 Trans alt: 11000' 1. Aircraft arriving from northeast and southeast descend in holding pattern.				



Gnd speed-Kts	70	90	100	120	140	160	PAPI	1500' ↑	on 211° hdg	2000' ↻ RT	KPS *251
Descent Angle	3.00°	372	478	531	637	743					
NDB to MAP	2.9	2:29	1:56	1:44	1:27	1:15	1:05				

STRAIGHT-IN LANDING RWY 21		CIRCLE-TO-LAND		
MDA(H) 380' (348')				
PANS OPS	A	Max Kts	100	MDA(H) 480' (448')-2400m
	B		135	610' (578')-2400m
	C		180	710' (678')-3200m
	D		205	730' (698')-3600m

Standard Enroute Operational and Reference Notes

KAMPHAENG SAEN CTR Controlled Airspace

Restriction

Excluding Bangkok Control Zone

BANGKOK TMA APPROACH WEST (APW Controlled Airspace

Speed

SPEED RESTRICTIONS WITHIN BANGKOK TMA

Below 10000' 250KTS unless previously removed by ATC.

VTBD Arrivals

Intermediate approach phase 210 KTS.

Final approach phase

On or shortly before the closing heading on the ILS 160KTS to 180KTS.

When established on the ILS 160KTS.

Restriction

Excluding Bangkok CTR, Kamphaeng Saen CTR, DAR sector, DDP sector, VT(D)-16, VT(D)-17, VT(D)-18, VT(D)-47, VT(D)-72.